

Neo design studio

EXCEPTIONAL INTERIOR ENVIRONMENTS

www.neodesignstudio.com



AN INTRODUCTION...

Neo Design Studio is a multidisciplinary design practice. The firm partners possess education as well as professional experience from the disciplines of interior design, architecture and lighting design. We have worked together for the majority of our professional careers.

Our practice has a focus on hotel, resort, foodservice, club, wellness and retail interiors although we also work on residential and specialty maritime commissions. We bring passion, dedication and resourcefulness coupled with principal involvement throughout the development and construction of each project.

An integral element of our process begins with understanding the objectives and goals of each project. We expand upon this base with a synthesis of careful analysis, intuition, experience, observations, thought leadership and pragmatic problem-solving skills.

From initial concepts through construction to project closeout, we provide meticulous attention to the details of our craft. Utilizing the elements of context, place identity and human engagement, we strive to infuse projects with synergy of place. Our measure of success is inextricably linked to the success of our client's ventures.

Our studio is a collaborative environment. We partner with all members of project teams to include clients, stakeholders and project consultants. We also collaborate with artisans, craftsmen, fabricators and manufacturers throughout project development. The result of this process assures clients of a completed project that addresses their interests providing them with enduring value.



NAKOMA GOLF RESORT

Clio, California

Located in a scenic area of Northern California known as the Lost Sierra's, Nakoma Golf Resort's crown jewel is a stunning clubhouse originally conceived by Frank Lloyd Wright In 1929.

The clubhouse was eventually built seventy - six years later as part of a larger golf resort. The property owners purchased the rights to the original design working with Taliesin West of Scottsdale, Arizona to update the building to current day code subsequently building the clubhouse on their land.

Purchased at a bankruptcy sale following the Great Recession, the current owners commissioned us to renovate a cocktail lounge in the clubhouse converting it into a shoulder season dining venue while retaining the lounge element for peak summer season.

Our work scope included new furnishings, some new fixtures, redesign and rebuilding of the banquette seating area wrapping the perimeter of the main room and commissioned artwork that doubled as signage for the lounge. The bar received new barstools and a small cocktail seating area was added nearby. This project was completed for a modest thirty thousand dollars.









ODESSA MOTOR YACHT

Cayman Islands

International Superyacht Society Yacht of the Year

The owner of this luxury yacht had a vision of a decidedly modern aesthetic that would require unsurpassed quality of interior execution and finish. The precise detail of this vessel revealed itself in the exceptionally clean lines with nothing to hide any miscues during construction.

Doors have flush casings, baseboards are aligned with the wall panels above, no crown moldings exist to conceal the intersection of wall and ceiling planes. HVAC is supplied through reveals to conceal its presence.

An onyx bar floating atop an absolute black granite base is backlit to achieve the appearance of floating. Exterior cabinetry features sliding countertops concealing sinks with folding faucets to maintain a minimalist aesthetic when not in use. A desk in the owners office disappears into cabinetry when not in use.

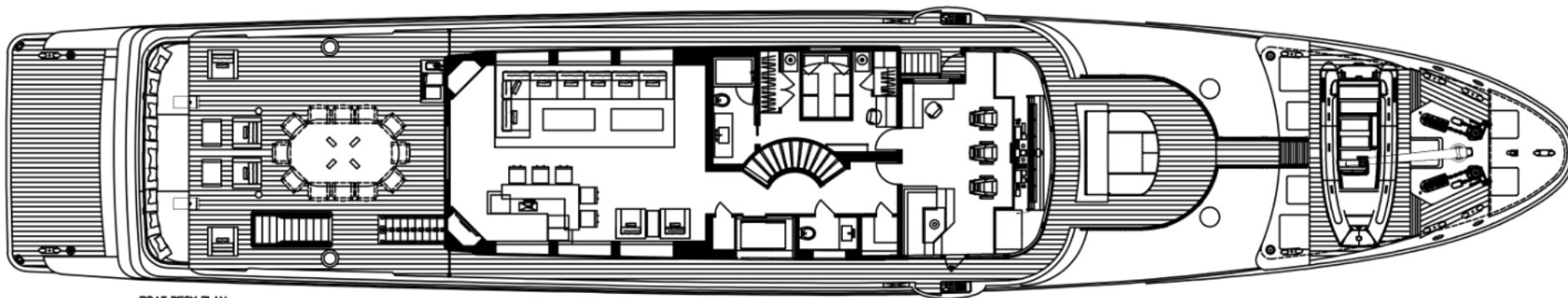
Every detail of this vessel has been distilled to its essence. Architectural finishes are consistent inside as well as outside to develop a streamlined appearance.

This project necessitated very close collaboration between the design team, ownership and crew, which was tasked with precision execution. Upon completion and launch, Odessa has been sailing the Caribbean and Mediterranean seas.

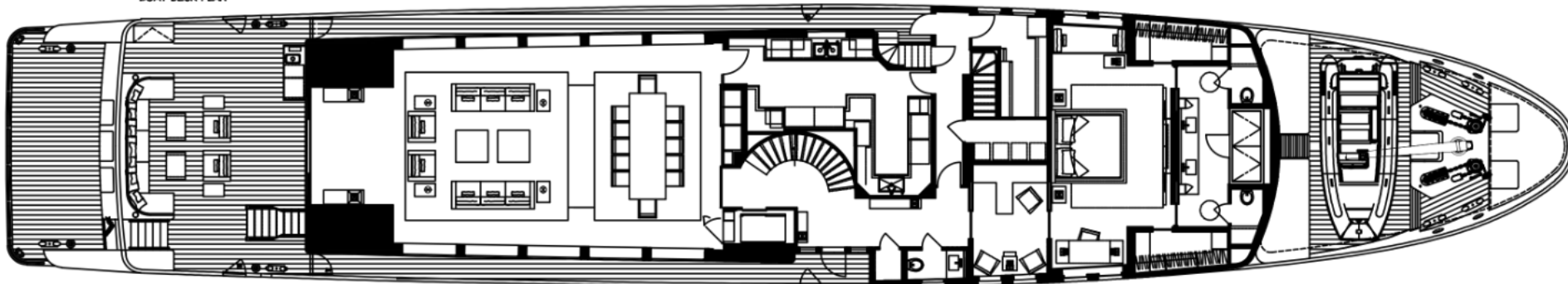
Odessa represents the best of what can be accomplished with a truly collaborative team working together toward a common goal. KC Harrison led the in-house design and engineering teams for this complete interior fit out while with Christenson Yachts.







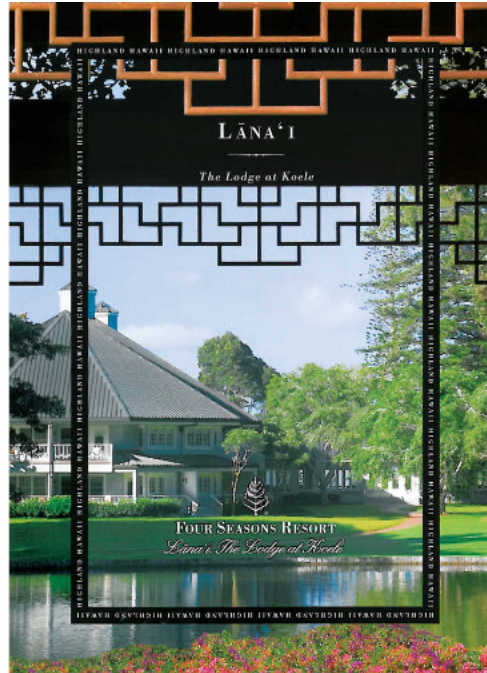
BOAT DECK PLAN



MAIN DECK PLAN



LOWER DECK PLAN



KOELE LODGE

Lana'i, Hawaii

Conde Nast Traveler Readers Choice Award

Originally developed by Castle and Cooke Resorts, Koele Lodge was envisioned as a Hawaiian style country manor exhibiting an infusion of foreign influences with its unique regional architectural vernacular.

The completed interior design utilizes native materials and a mix of design influences derived from various inhabitants of the Hawaiian Islands over time. Lana'i is the sixth largest of the Hawaiian Islands encompassing one hundred forty square miles. It is also the most pristine noted for its history as a pineapple plantation.

The lodge offers multiple dining and lounge venues, art galleries and a library along with one hundred two keys. Amenities include equestrian and tennis facilities, golf courses with clubhouses set amidst the lush grounds of this privately owned island.

Koele Lodge has received multiple annual awards from Conde Nast Traveler. Cited as one of the top four Hawaiian resorts, it is aptly described it as "an enchanting upcountry getaway" on the Conde Nast Gold List.

Peter Houseknecht was an integral part of the interiors team while working with a Bay Area firm prior to joining Neo Design Studio as one of the firm's founding partners.









BANDON DUNES GOLF RESORT

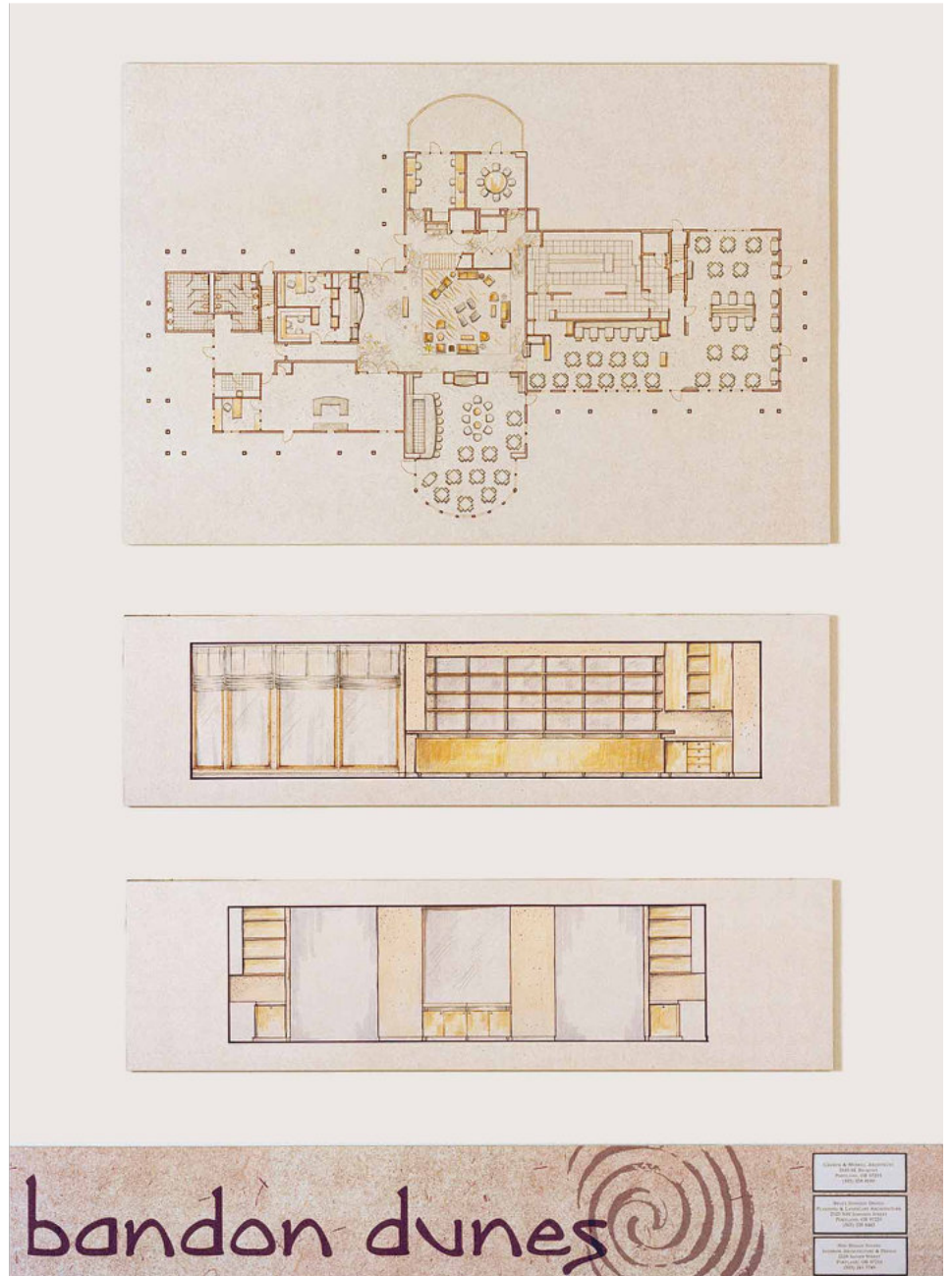
Bandon, Oregon

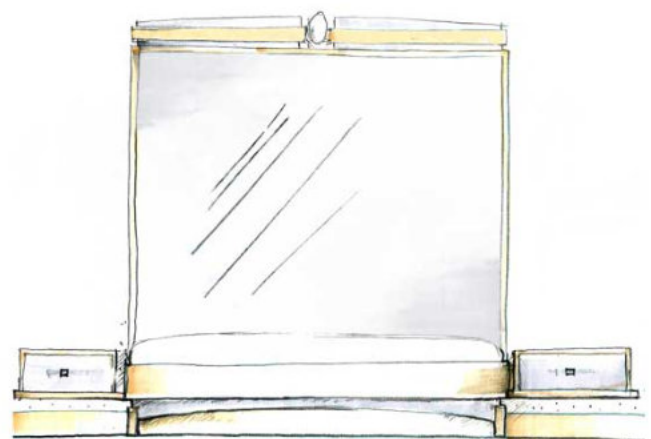
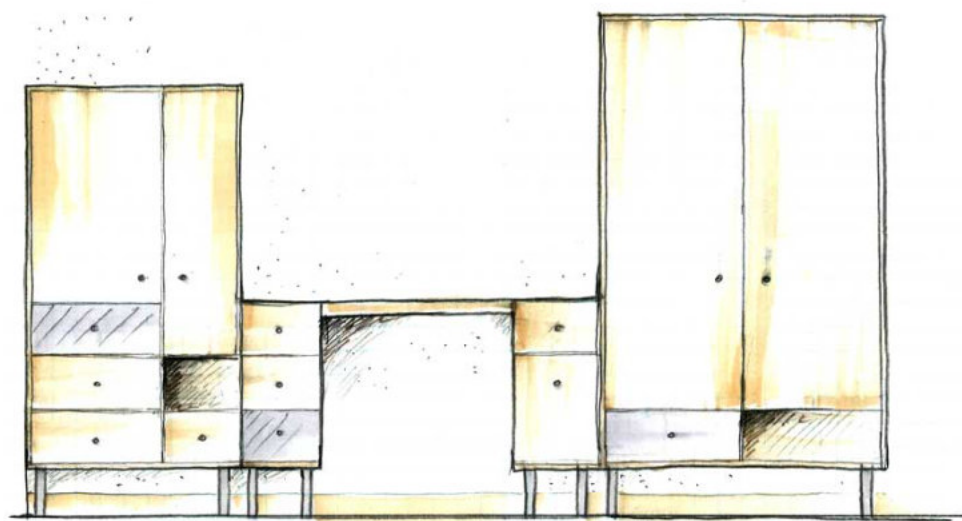
Bandon Dunes features an expansive clubhouse of approximately thirty-eight thousand square feet also serving the larger resort as the main lodge. The clubhouse features two restaurants, a pro shop, sports bar and a library for guest use. A second story includes twenty - six guestrooms oriented toward single occupants along with three suites.

In the first phase of development for this property on the Southern Oregon coastline, guest room offerings also included forty - eight cottage units scattered around a large lily pond. Intended to cater to couples, these rooms offer an upgraded, generous footprint with fireplaces, wet bars and private patios.

The design concept for this property was cultivated from a blend of New England and Celtic elements with a modern twist. Light wood tones, stainless metal finishes and a neutral color palette reflect the inherent characteristics and color palette of the Pacific Northwest coastline.

Bandon Dunes Golf Resort caters almost exclusively to golf enthusiasts and has become a frequently cited bucket list item for devotees of the sport. The resort currently offers four eighteen - hole golf courses.







LARKSPUR LANDING

Multiple West Coast Locations

Originally developed by Larkspur Hospitality, Larkspur Landing hotels were Karl Hoagland's first foray into the hospitality industry. Guided by his intuition, he sought an Arts and Crafts aesthetic for these new construction properties. Blended with modern touches to create a more timeless environment, Larkspur Landings quickly became very popular with corporate clients.

Neo Design Studio provided prototype as well as site-specific interior design services for these extended stay hotels developed in the Western region.

All properties feature four different unit types with fully stocked kitchens. Fixture, furnishing and equipment budgets averaged two million dollars per property with a median footprint of eighty thousand square feet per location. Our work scope included custom designed case goods and lighting as well as extensive use of artwork throughout the property to create a very residential environment.







CHAUSSEUR MOTOR YACHT

Cayman Islands

International Superyacht Society Best Powerboat Design

The owner of this luxury yacht was captivated by Odessa Motor Yacht. It's clean lines and exacting detail strongly resonated with his personal aesthetic. His objective was to improve upon the result with Chausser Motor Yacht.

Light toned woods and clear glass minimize the barrier between interior and exterior spaces throughout this vessel. Teak decking commonly found on yacht exteriors continues into the interior creating continuity. Furnishings and textiles cultivate a subdued palette so as not to distract from the beauty of the ocean.

A critical element in achieving the desired result was once again, a close collaborative effort between the shipyards team and the yacht owner. KC Harrison led the in-house design and engineering teams for this complete interior fit out while with Christenson Yachts.

Upon completion and launch, Chasseur has been sailing the Caribbean and Mediterranean seas both as a private as well as a charter vessel.







VAN DUZER VINEYARDS TASTING ROOM

Dallas, Oregon

USA Today Readers Choice Top Ten Tasting Rooms

This client requested that their new tasting room share the same Art Nouveau sensibility as collateral materials developed for the winery. The lush natural environment inherent to the Pacific Northwest landscape is reflected in maps of the grounds, a quarterly newsletter and in the various wine labels.

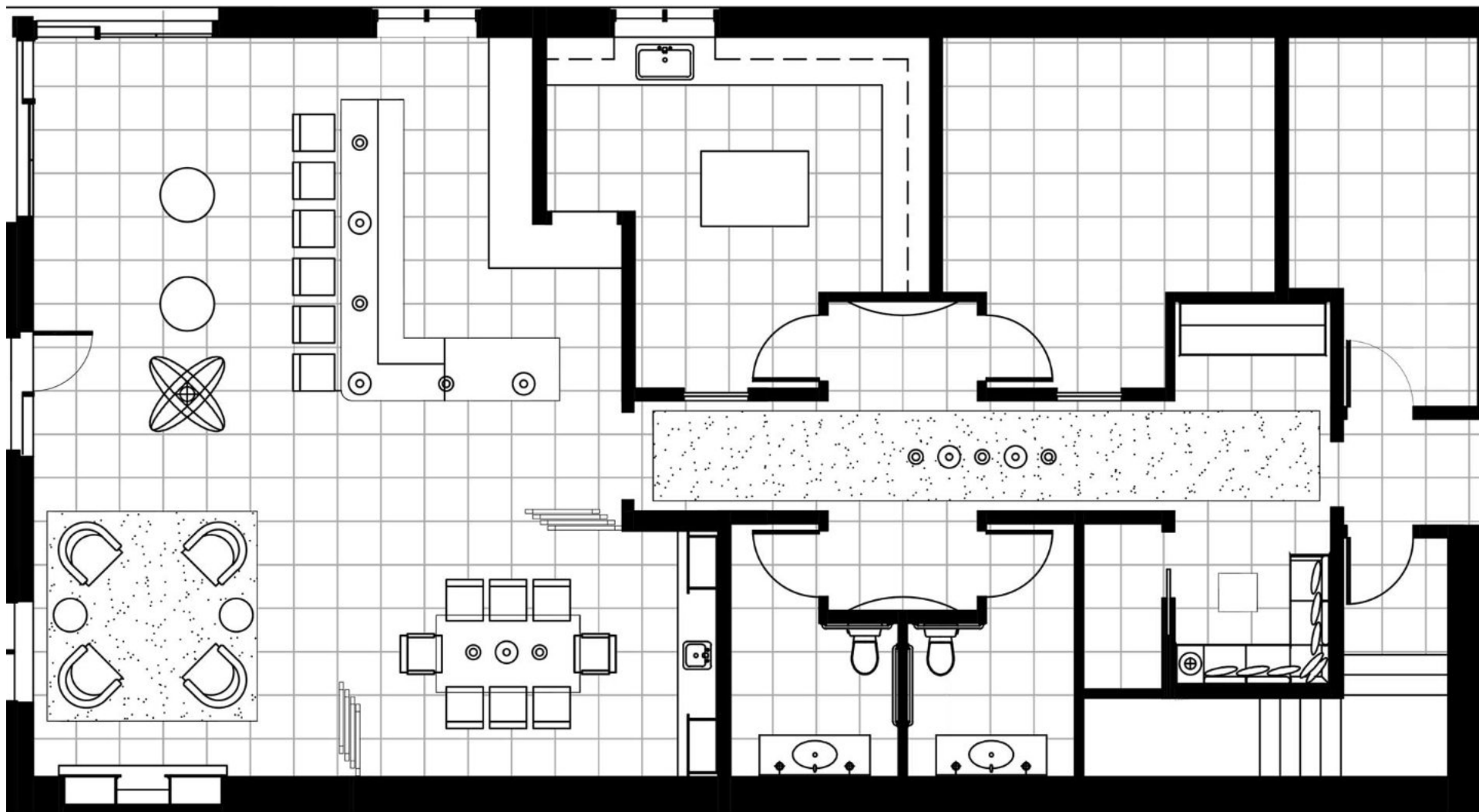
Elements utilized in the completed interior design include a hand stenciled pattern on the barrel-vaulted ceiling and a custom designed armillary fixture as well as custom blown glass diffusers for pendant fixtures throughout. Rugs designed for the tasting room allude to a colorful map of the grounds. Interior signage features a font common to many of the wine labels.

Modern furnishings with hints of the label's Art Nouveau character were selected or custom made. Commissioned local artists depict plein - aire scenes of the hillside and interpretive themes of wind and movement, which are inherent to the microclimate of this area of the Northern Willamette valley.

Van Duzer Vineyards tasting room and barrel storage areas offer private winemaker dinners and wine club functions. The facility is open to the public in addition to private groups by appointment. The tasting room comprises fifteen hundred square feet and was completed for seven hundred thousand dollars.







"We hired Neo Design Studio to redesign the penthouse level of our hotel. Their ability to quickly identify the objective, prepare a realistic budget, generate quality Auto Cad drawings and present proposed soft goods and finishes saved us time and money. The depth of their abilities really became apparent as the final selections and adjustments were made. Always, they paid attention to budget.

Peter and Lisa work very well together and between them developed a design solution for this project that won the enthusiastic support of the owners, the hotel operators as well as the staff. And if you know this industry, that is difficult to do! Noteworthy as well ... they are both a joy to work with."

**Richard Meade
Westin Hotel
Portland, Oregon**

"From project inception, throughout, and to its completion, Neo Design Studio performed beyond contractual requirement, often lending their assistance in all design related matters. Lisa demonstrated her utter commitment to every detail, including personal production of custom fabric, some wall finishes as well as procurement and installation of some very unique features of the restaurant. Our demands were exacting with a precise budget. They presented materials that were at once, pertinent and within our budget. This and other demonstrative gestures won our confidence early on, making our relationship a winning one. Neo Design Studio was key to the success of this project."

**Fernando Divina,
Fiddleheads Restaurant + Bar
Portland, Oregon**

"My partner and I secured the services of Lisa Marechal to design our boutique store, Classic Option. We offer women's evening - wear for both sale and short - term rental. Lisa presented us with a realistic picture of what the project constraints would be but was also filled with enthusiasm offering a number of possibilities worth consideration as design solutions. We have received many compliments on our shop. One of the nicest was to be included in an article about San Francisco's most intriguing boutique stores shortly after opening. This compliment belongs to Lisa's efforts as much as it does to us."

**Leslie Aunola
Classic Option Couture + Rental Collection
San Francisco, California**

"Neo Design Studio has done outstanding work for Larkspur Hotels + Restaurants and is highly recommended by our company. They have totally immersed themselves in the design of our Larkspur Landing prototype and developed an exciting and unique interior design package that is unlike any in the hotel industry. Neo Design Studio custom designed many aspects of the interior spaces including case goods, lighting and hardware. We believe this interior design package will favorably differentiate our Larkspur Landings resulting in superior market share and financial performance of our properties."

**Karl Hoagland
Larkspur Hotels + Restaurants
Corte Madera, California**

PACIFIC NORTHWEST

1750 Blankenship Road
Suite 400
West Linn, Oregon 97065

KC Harrison
kc@neodesignstudio.com
503 • 241 • 6449

LAKE TAHOE

770 Mays Boulevard
Box 6944
Incline Village, Nevada 89450

Lisa Marechal
lisa@neodesignstudio.com
775 • 419 • 0449

www.neodesignstudio.com